

## Specification

### MEGA Mount L

Weight : 66.4 g (2.34 oz)

Size : A 61 mm (2.40")

B 110 mm (4.33")

C 47 mm (1.85")

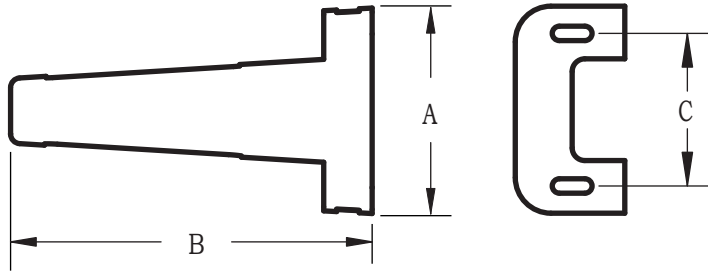
### MEGA Mount S

Weight : 30.5 g (1.08 oz)

Size : A 48 mm (1.89")

B 77 mm (3.03")

C 36 mm (1.42")



## Contents

MEGA Mount : 1 pair (left, right)

Pack A : Lench bolt X 4, Flat washer X 8, Spring washer X 4,  
Nylon nut X 4, L lench X 1

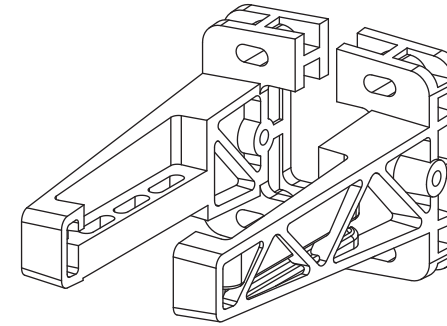
Pack B : Lench bolt X 4, Flat washer X 4, Blind nut X 4



182-4 Dodang-dong Wonmi-ku Bucheon-city Kyunggi-do South Korea, 420-806  
tel : 82-32-684-6964~7, fax : 82-32-232-0391, e-mail : support@teamproton.com

## MEGA Mount Model Engine Mount

### INSTRUCTION MANUAL



MEGA mount is designed based on the theory of structural mechanics to provide higher performance with 45% less weight. Also its slot type mounting holes allow the installation of 2 or 4 - stroke engines ( O.S™, Super Tigre™, Thunder Tiger™, SAITO™, etc. ) and the adjustment of engine positions.

## Features

### - Strong Structure

Truss structure of Mega mount is strong enough for shock and vibration of engines.

### - Mounting Slots

MEGA mount has mounting slots that allow adjustment of engine position.

### - Stainless steel Hardware

The material of hardware included in the package is stainless steel. The name originates from the fact that stainless steel does not stain, corrode or rust as easily as ordinary steel. So they keep durability at any tough condition.

### - Line up for all engines

2 kinds of MEGA Mounts are available. "MEGA Mount L" is for .60 - 1.20 engines and "MEGA Mount S" is for .20 - .50.